

**8s**  
**1926**  
**Feb.20**  
**NeAnL**  
**c.3**











A  
07B

826.

ON PUBLIC EXHIBITION FROM FRIDAY, FEBRUARY TWELFTH  
[WEEK DAYS 9-6 P.M.—SUNDAY 2-5 P.M.]

THE ART COLLECTIONS  
OF THE LATE  
VISCOUNT LEVERHULME  
[PART THREE]  
PORCELAINS

TO BE SOLD BY ORDER OF THE EXECUTORS  
AT UNRESERVED PUBLIC SALE  
SATURDAY AFTERNOON  
FEBRUARY TWENTIETH  
AT TWO-THIRTY

THE ANDERSON GALLERIES  
MITCHELL KENNERLEY [PRESIDENT]  
489 PARK AVENUE AT FIFTY-NINTH STREET, NEW YORK  
1926

CL.  
Aa  
NO.  
1807B  
ACC.

LIBRARY  
M. Knoedler & Co  
14 East 57th St.  
New York

8-Powder-blue vase (Kang-Hsi, circa 1690), J. Joseph.	40	106-Fine Worcester vase (English, circa 1830), Phillip Suval.	200
9-Powder-blue saucer dish (Kang-Hsi, circa 1690), J. Joseph.	40	107-Fine pair of Worcester vases (English, circa 1830), B. J. Klar.	170
10-Powder-blue vase (Kang-Hsi, circa 1690), Warren Cox.	45	108-Fine Worcester vase (English, circa 1830), H. Murray.	200
8-Powder-blue bowl and cover (Kang-Hsi, circa 1690), Frank Partridge.	90	109-Pair of Worcester china wall Rockets (English, circa 1800), P. A. Barker.	80
9-Two powder-blue vases (Kang-Hsi, circa 1690), G. R. Gates.	140	110-Plate from the famous Nelson service of Worcester porcelain (English, 1798-99), Mrs. P. B. K. Daingerfield.	175
10-Powder-blue vase (Kang-Hsi, circa 1690), Isaac Voron.	45	111-Plate from the famous Nelson service of Worcester porcelain (English 1798-99), Mrs. P. B. K. Daingerfield.	175
11-Large circular dish in powder-blue (Kang-Hsi, circa 1690), Frank Partridge.	525	112-Fine and important Chelsea figure (English, 1765), B. N. Needham.	320
12-Powder-blue vase (Kang-Hsi, circa 1690), J. Joseph.	250	113-Very fine pair of Chelsea arbor candlesticks (English, circa 1750), Phillip Suval.	210
13-Powder-blue bowl and cover (Kang-Hsi, circa 1690), H. Counihan, agent.	155	114-Very fine pair of Chelsea arbor candelabra (English, circa 1750); P. Suval.	40
14-Powder-blue bowl and cover (Kang-Hsi, Circa 1690), Mrs. Stephenson Scott.	100	115-Very fine pair of Chelsea arbor candelabra (English, circa 1750), B. N. Needham.	375
15-Powder-blue circular saucer dish (Kang-Hsi, Circa 1690), H. H. Babcock.	25	116-Important figure of Jupiter in Chelsea porcelain (English, circa 1780), Symons, Inc.	875
16-Very fine powder-blue circular bowl (Kang-Hsi, Circa 1690), J. R. Gates.	130	117-Important figure of Juno in Chelsea porcelain (English, circa 1780), Symons, Inc.	375
17-Powder-blue saucer dish (Kang-Hsi, Circa 1690), J. Joseph.	70	118-Very fine Chelsea porcelain group (English, circa 1760), B. N. Needham.	785
18-Powder-blue bowl and cover (Kang-Hsi, Circa 1690), Mrs. Carl Holmes.	55	119-Chelsea vase (English, circa 1750), Myer Linker.	65
19-Powder-blue circular plate (Kang-Hsi, Circa 1690), Carvalho Bros.	185	120-Female bust in Chelsea porcelain (English, circa 1780), H. B. Culver.	20
20-Powder-blue circular plate (Kang-Hsi, Circa 1690), J. R. Gates.	150	121-Fine pair of Crown Derby vases (English, circa 1790), Mrs. John Farr.	160
21-Large circular dish in powder-blue (Kang-Hsi, Circa 1690), W. H. Williams.	300	122-Pair of Crown Derby vases (English, circa 1790), Warren E. Cox.	70
22-Pair of powder-blue vases (Kang-Hsi, Circa 1690), Frank Partridge.	160	123-Pair of Crown Derby vases (English, circa 1790), P. Suval.	115
23-Powder-blue vase (Kang-Hsi, Circa 1690), Frank Partridge.	110	124-Fine Crown Derby vase (English, circa 1790), F. J. Cuthbertson.	100
24-Powder-blue circular bowl (Kang-Hsi, Circa 1690), J. R. Gates.	85	125-Set of three Crown Derby vases (English, circa 1790), H. E. Durand.	160
25-Powder-blue vase (Kang-Hsi, Circa 1690), J. R. Gates.	125	126-Vine fine group in Derby Biscuit porcelain (English, circa 1770), H. G. Ferguson.	35
26-Important vase in powder-blue (Kang-Hsi, Circa 1690), J. R. Gates.	400	127-Fine figure of boy in Derby Biscuit porcelain (English, circa 1770), Mrs. A. E. Levy.	40
27-Important vase in powder-blue (Kang-Hsi, Circa 1690), Frank Partridge.	85	128-Fine figure of boy in Derby Biscuit porcelain (English, circa 1780), Mrs. A. E. Levy.	35
28-Pair of powder-blue vases (Kang-Hsi, Circa 1690), H. Counihan, agent.	475	129-Finely modeled figure of William Pitt in Derby Biscuit porcelain (English, circa 1785), H. Counihan, agent.	75
29-Important vase in powder-blue (Kang-Hsi, Circa 1690), R. M. Chait.	75	130-Finely modeled figure of William Wilberforce in Derby Biscuit porcelain (English, circa 1785), H. Counihan, agent.	45
30-Superb powder-blue vase (Kang-Hsi, Circa 1690), J. R. Gates.	1,000	131-Finely modeled figure of Mrs. Arden in Derby Biscuit porcelain (English, circa 1785), H. Counihan, agent.	75
31-Superb powder-blue vase (Kang-Hsi, Circa 1690), J. R. Gates.	1,000	132-Finely modeled figure of Charles James Fox in Derby Biscuit porcelain (English, circa 1780), H. Counihan, agent.	75
32-Two powder-blue vases (Kang-Hsi, Circa 1690), Frank Partridge.	375	133-Figure of a lady in Derby Biscuit porcelain (English, circa 1780), H. Counihan, agent.	25
33-Powder-blue sprinkler vase with peach-bloom decoration (Kang-Hsi, Circa 1690), L. B. Hammond.	120	134-Pair of seated figures in Biscuit porcelain (English, circa 1770), H. Counihan, agent.	90
34-Powder-blue jar and cover (Kang-Hsi, Circa 1690), R. N. Woods.	35	135-Small vase in Derby Biscuit porcelain (English, circa 1780), R. A. Barker.	25
35-Powder-blue spruder vase (Kang-Hsi, Circa 1690), H. Counihan, agent.	500	136-Fine Wedgwood plaque (English, circa 1780), Myer Linker.	80
36-Magnificent Famille-noire vase and cover (Kang-Hsi, Circa 1690), H. S. Grelms.	900	137-Wedgwood portrait medallion (English, circa 1780), Kent Scientific Museum.	80
37-Magnificent famille-noire vase and cover (Kang-Hsi, Circa 1690), H. S. Grelms.	350	138-Fine vase in blue and white Wedgwood china (English, circa 1780), Emslie Nicholson.	90
38-Powder-blue vase (Kang-Hsi, Circa 1690), W. E. Benjamin.	75	139-Fine pedestal in blue and white Wedgwood china (English, circa 1780), Emslie Nicholson.	45
39-Pair of important famille-verte vases (Kang-Hsi, Circa 1675), Miss H. Counihan, agent.	1,500	140-Fine Wedgwood plaque (English, circa 1780), W. E. Benjamin.	50
40-Pair of famille-verte jars and covers (Kang-Hsi, Circa 1690), Miss H. Counihan, agent.	1,950	141-Fine Wedgwood plaque (English, circa 1780), W. E. Benjamin.	80
41-Pair of famille-verte jars and covers (Kang-Hsi, Circa 1675), L. B. Hammond.	825	142-Fine Wedgwood plaque (English, circa 1780), W. E. Benjamin.	75
42-Important Famille-verte Vase and Cover (Kang-Hsi, Circa 1765), L. Kayton.	750	143-Pedestal in blue and white Wedgwood china (English, circa 1790), P. Suval.	15
43-Important Famille-verte Vase and Cover (Kang-Hsi, Circa 1765), L. Kayton.	750	144-Pedestal in blue and white Wedgwood china (English, circa 1790), W. E. Cox.	10
44-Important Famille-verte Vase and Cover (Kang-Hsi, Circa 1765), L. B. Hammond.	900	145-Pedestal in blue and white Wedgwood china (English, circa 1790), P. Suval.	15
45-Important Famille-verte Vase and Cover (Kang-Hsi, Circa 1765), L. B. Hammond.	900	146-Fine Wedgwood plaque (English, circa 1780), Myer Linker.	55
46-Important Famille-verte Vase and Cover (Kang-Hsi, Circa 1765), T. E. Hanley.	900	147-Fine Wedgwood plaque in black basalt (English, circa 1780), C. H. Brown.	45
47-Superb Vase in Green, Yellow and Aubergine (Kang-Hsi, Circa 1685), F. Partridge.	3,100	148-Wedgwood oval plaque in green jasper (English, circa 1780), C. H. Brown.	45
48-Vase with Fine Flambe-red Glaze (Kang-Hsi, Circa 1690), Miss H. Counihan.	160	149-Blue and white oval medallion by Turner (English, circa 1780), C. H. Brown.	55
49-Bronze Shape Vase with Fine Flambe-red Glaze (Kang-Hsi, Circa 1670), Emslie Nicholson.	250	150-Very fine dessert service in old Sevres porcelain of the first royal epoch (French, circa 1770).	
50-Superb Tripod Incense Burner (Ming, Circa 1450), Barnet J. Klar.	180	151-Very fine desert service in old Sevres porcelain of the first royal epoch (French, circa 1770).	
51-Fine Figure of Kwan-yin in Blanc-de-Chine (Kang-Hsi, Circa 1680), Dr. E. Elliot.	100		
52-Fine Figure of Kwan-yin in Blanc-de-Chine (Kang-Hsi, Circa 1680), Dr. E. Elliot.	50		
53-Large Blue and White Bottle (Kang-Hsi, Circa 1690), Barnet J. Klar.	50		
54-Superb Blue and White "Hawthorn" Jar (Kang-Hsi, Circa 1680), T. E. Hanley.	260		
55-Fine Blue and White "Hawthorn" Jar (Kang-Hsi, Circa 1680), L. B. Hammond.	250		
56-Fine blue and white "Hawthorn" jar (Kang-Hsi, Circa 1680), L. B. Hammond.	250		



THE  
\*\*\*

# LEVERHULME VASE IS SOLD FOR \$3,100

Porcelains at Auction Bring  
\$43,285, Swelling Total  
to \$1,032,285.

## MOST TO STAY IN AMERICA

Collector Pays \$2,000 for a 45-Piece  
Dessert Service With Shake-  
spearian Scenes.

The porcelains of the late Viscount Leverhulme's art collections were sold yesterday afternoon at the Anderson Galleries for \$43,285, making the total so far realized from paintings, furniture, tapestries and porcelains \$1,032,285. One hundred and sixty-three articles were sold yesterday. Most of them were English and Chinese, but a few were Continental.

The high price was \$3,100, which Frank Partridge, Inc., New York and London art dealers, paid for a Chinese vase in green, yellow and aubergine, which dates back to 1665. It is fashioned in a quadrangular form, tapering toward the base. The sides are enameled in a clear, soft green. A design of flowers, emblematic of the four seasons, is outlined in soft Indian ink of three colors. Sloping shoulders are enameled in clear yellow, with a decoration of three-colored leaves and flowers. The vase stands nineteen inches high.

\$2,000 for Dessert Service.

B. N. Needham, a New York collector, paid \$2,000 for a Chamberlain Worcester dessert service of forty-five pieces. This English ware was made about 1790. It is white with lavish gold decorations, each piece bearing on its face a painted representation of a scene from one of Shakespeare's plays, and on its reverse an appropriate quotation from the bard. It is inscribed "Chamberlains Worcester, manufacturers to their Royal Highnesses the Prince of Wales and Duke of Cumberland."

An agent for a private collector, who preferred to remain anonymous, paid \$1,600 each for two Chinese powder-blue vases, each 16 1/2 inches high, with brilliantly colored panels representing flowering plants, rocks and insects. They go back to about 1690.

William Rhinelander Stewart made several purchases. Most of the porcelains, it is said, will remain in this country, but Frank Partridge, Inc., it is said to be buying a few to remain in American Museum

- 57-Canister vase in blue and white (Kang-Hsi, circa 1680), Roland N. Moore ..... 275
- 58-Canister vase in blue and white (Kang-Hsi, circa 1680), Roland N. Moore ..... 275
- 59-Blue and white bottle (Kang-Hsi), circa 1700, Barnet J. Klar ..... 80
- 60-Blue and white bottle (Kang-Hsi, circa 1700), Barnet J. Klar ..... 80
- 61-Small blue and white sprinkler vase (Kang-Hsi, circa 1700), W. R. Stewart ..... 85
- 62-Small blue and white sprinkler vase (Kang-Hsi, circa 1700), W. R. Stewart ..... 90
- 63-Very fine blue and white jar and cover (Kang-Hsi, circa 1680), F. Partridge ..... 260
- 64-Blue and white circular bowl (Kang-Hsi, circa 1700), E. E. Spitzer ..... 35
- 65-Blue and white circular bowl (Kang-Hsi, circa 1700), E. E. Spitzer ..... 35
- 66-Fine blue and white vase (Kang-Hsi, circa 1700), T. E. Hanley ..... 120
- 67-Fine vase in blue and white (Kang-Hsi, circa 1680), Mrs. J. L. Schroeder ..... 90
- 68-Fine blue and white vase and cover (Kang-Hsi, circa 1670), B. Callingham ..... 50
- 69-Very fine blue and white beaker (Kang-Hsi, circa 1690), F. Partridge ..... 90
- 70-Very fine blue and white beaker (Kang-Hsi, circa 1680), F. Partridge ..... 90
- 71-Fine blue and white vase and cover (Kang-Hsi, circa 1680), F. Partridge ..... 90
- 72-Fine blue and white vase and cover (Kang-Hsi, circa 1690), F. Partridge ..... 50
- 73-Fine blue and white vase and cover (Kang-Hsi, circa 1690), F. Partridge ..... 100
- 74-Blue and white "Hawthorn" jar and cover (Kang-Hsi, circa 1700), W. E. Benjamin ..... 110
- 75-Blue and white "Hawthorn" jar and cover (Kang-Hsi, circa 1700), W. E. Benjamin ..... 110
- 76-Fine blue and white garniture (Kang-Hsi, circa 1680), M. E. Mossel ..... 350
- 77-Fine blue and white garniture (Kang-Hsi, circa 1680), H. Counihan, agent ..... 485
- 78-Tall blue and white beaker (Kang-Hsi, circa 1700), F. Partridge ..... 125
- 79-Tall blue and white beaker (Kang-Hsi, circa 1700), F. Partridge ..... 125
- 80-Large blue and white circular dish (Kang-Hsi, circa 1700), Mrs. W. H. Miller ..... 25
- 81-Large blue and white circular dish (Kang-Hsi, circa 1700), W. R. Stewart ..... 50
- 82-Blue and white jar and cover (Kang-Hsi, circa 1680), T. E. Hanley ..... 320
- 83-Blue and white jar and cover (Kang-Hsi, circa 1690), D. F. Page ..... 300
- 84-Blue and white cylindrical vase (Kang-Hsi, circa 1680), Roland N. Moore ..... 55
- 85-Blue and white cylindrical vase (Kang-Hsi, circa 1680), Roland N. Moore ..... 40
- 86-Fine blue and white jar and cover (Kang-Hsi, circa 1690), F. Partridge ..... 260
- 87-Fine blue and white garniture (Kang-Hsi, circa 1680), M. E. Mossel ..... 275
- 88-Blue and white vase (Kang-Hsi, circa 1700), W. R. Stewart ..... 375
- 89-Blue and white vase (Kang-Hsi, circa 1700), W. R. Stewart ..... 375
- 90-Blue and white garniture (Kang-Hsi, 1700), H. Counihan, agent ..... 250
- 91-Large blue and white fish bowl (Chien-Lung, circa 1780), R. M. Chait ..... 80
- 91A-Ewer in cafe-au-lait and blue and white (Kang-Hsi, circa 1700), R. M. Chait ..... 30
- 92-Blue and white flower bowl (Kang-Hsi, circa 1690), Barnet

- 102-Very fine Sevres porcelain of the first royal epoch (French, 1770); Mrs. M. L. Schwartz ..... 1,750
  - 153-Pair of old Sevres sucriers and covers (French, 1778); Mrs. M. L. Schwartz ..... 115
  - 154-Fine ewer and bowl in old Sevres porcelain (French, 1778); Mrs. M. L. Schwartz ..... 100
  - 155-Pair of fine Sevres vases mounted in ormolu (French, circa 1780); N. H. Stone ..... 200
  - 156-Pair of fine vases and covers in Sevres porcelain of the first royal epoch (French, 1783); Kant Scientific Museum ..... 15
  - 157-Teacup in old Sevres porcelain (French, 1770); Mrs. H. G. Ferguson ..... 260
  - 158-Old Sevres cabaret in Gros-bleu, French, circa 1780, Mrs. M. L. Schwartz ..... 270
  - 159-Sevres group of dancing figures in biscuit porcelain, French, circa 1780, Emslie Nicholson ..... 240
  - 160-Sevres group of dancing figures in biscuit porcelain, French, circa 1780, M. G. Scoville ..... 140
  - 161-Fine pair of vases in Chantilly porcelain, French, circa 1805, Barnet J. Klar ..... 160
  - 162-Fine Capo di Monte plaque, Italian, circa 1760, G. W. Eccles ..... 375
  - 163-Cabaret in old Vienna porcelain, Austrian, circa 1750, Symons, Inc. .... 90
- Viscount Leverhulme's art library will be sold tomorrow and Tuesday afternoons.

96-Important early Worcester vase and cover (English, circa 1770), W. E. Benjamin ..... 500

97-Important early Worcester vase and cover (English, circa 1770), W. E. Benjamin ..... 300

98-Teapot and cover of early Worcester porcelain (English, circa 1770), W. E. Benjamin ..... 500

99-Sugar bowl and cover of early Worcester porcelain (English, circa 1770), W. E. Benjamin ..... 70

100-Very important Chamberlain Worcester dessert service (English, circa 1790), B. N. Needham ..... 2,000

101-Very fine early Worcester dessert service (English, circa 1790), B. N. Needham ..... 475

102-Very fine Worcester ruby vase (English, circa 1830), Barnet J. Klar ..... 170

103-Important early Worcester vase and cover (English, circa 1770), W. E. Benjamin ..... 500

104-Important early Worcester vase and cover (English, circa 1770), W. E. Benjamin ..... 300

105-Teapot and cover of early Worcester porcelain (English, circa 1770), W. E. Benjamin ..... 500

106-Sugar bowl and cover of early Worcester porcelain (English, circa 1770), W. E. Benjamin ..... 70

107-Very important Chamberlain Worcester dessert service (English, circa 1790), B. N. Needham ..... 2,000

108-Very fine early Worcester dessert service (English, circa 1790), B. N. Needham ..... 475

109-Very fine Worcester ruby vase (English, circa 1830), Barnet J. Klar ..... 170

110-Important early Worcester vase and cover (English, circa 1770), W. E. Benjamin ..... 500

111-Important early Worcester vase and cover (English, circa 1770), W. E. Benjamin ..... 300

112-Teapot and cover of early Worcester porcelain (English, circa 1770), W. E. Benjamin ..... 500

113-Sugar bowl and cover of early Worcester porcelain (English, circa 1770), W. E. Benjamin ..... 70

114-Very important Chamberlain Worcester dessert service (English, circa 1790), B. N. Needham ..... 2,000

115-Very fine early Worcester dessert service (English, circa 1790), B. N. Needham ..... 475

116-Very fine Worcester ruby vase (English, circa 1830), Barnet J. Klar ..... 170

117-Important early Worcester vase and cover (English, circa 1770), W. E. Benjamin ..... 500

118-Important early Worcester vase and cover (English, circa 1770), W. E. Benjamin ..... 300

119-Teapot and cover of early Worcester porcelain (English, circa 1770), W. E. Benjamin ..... 500

120-Sugar bowl and cover of early Worcester porcelain (English, circa 1770), W. E. Benjamin ..... 70

121-Very important Chamberlain Worcester dessert service (English, circa 1790), B. N. Needham ..... 2,000

122-Very fine early Worcester dessert service (English, circa 1790), B. N. Needham ..... 475

123-Very fine Worcester ruby vase (English, circa 1830), Barnet J. Klar ..... 170

124-Important early Worcester vase and cover (English, circa 1770), W. E. Benjamin ..... 500

125-Important early Worcester vase and cover (English, circa 1770), W. E. Benjamin ..... 300

126-Teapot and cover of early Worcester porcelain (English, circa 1770), W. E. Benjamin ..... 500

127-Sugar bowl and cover of early Worcester porcelain (English, circa 1770), W. E. Benjamin ..... 70

128-Very important Chamberlain Worcester dessert service (English, circa 1790), B. N. Needham ..... 2,000

129-Very fine early Worcester dessert service (English, circa 1790), B. N. Needham ..... 475

130-Very fine Worcester ruby vase (English, circa 1830), Barnet J. Klar ..... 170

131-Important early Worcester vase and cover (English, circa 1770), W. E. Benjamin ..... 500

132-Important early Worcester vase and cover (English, circa 1770), W. E. Benjamin ..... 300

133-Teapot and cover of early Worcester porcelain (English, circa 1770), W. E. Benjamin ..... 500

134-Sugar bowl and cover of early Worcester porcelain (English, circa 1770), W. E. Benjamin ..... 70

135-Very important Chamberlain Worcester dessert service (English, circa 1790), B. N. Needham ..... 2,000

136-Very fine early Worcester dessert service (English, circa 1790), B. N. Needham ..... 475

137-Very fine Worcester ruby vase (English, circa 1830), Barnet J. Klar ..... 170

138-Important early Worcester vase and cover (English, circa 1770), W. E. Benjamin ..... 500

139-Important early Worcester vase and cover (English, circa 1770), W. E. Benjamin ..... 300

140-Teapot and cover of early Worcester porcelain (English, circa 1770), W. E. Benjamin ..... 500

141-Sugar bowl and cover of early Worcester porcelain (English, circa 1770), W. E. Benjamin ..... 70

142-Very important Chamberlain Worcester dessert service (English, circa 1790), B. N. Needham ..... 2,000

143-Very fine early Worcester dessert service (English, circa 1790), B. N. Needham ..... 475

144-Very fine Worcester ruby vase (English, circa 1830), Barnet J. Klar ..... 170

145-Important early Worcester vase and cover (English, circa 1770), W. E. Benjamin ..... 500

146-Important early Worcester vase and cover (English, circa 1770), W. E. Benjamin ..... 300

147-Teapot and cover of early Worcester porcelain (English, circa 1770), W. E. Benjamin ..... 500

148-Sugar bowl and cover of early Worcester porcelain (English, circa 1770), W. E. Benjamin ..... 70

149-Very important Chamberlain Worcester dessert service (English, circa 1790), B. N. Needham ..... 2,000

150-Very fine early Worcester dessert service (English, circa 1790), B. N. Needham ..... 475

151-Very fine Worcester ruby vase (English, circa 1830), Barnet J. Klar ..... 170

152-Important early Worcester vase and cover (English, circa 1770), W. E. Benjamin ..... 500

153-Important early Worcester vase and cover (English, circa 1770), W. E. Benjamin ..... 300

154-Teapot and cover of early Worcester porcelain (English, circa 1770), W. E. Benjamin ..... 500

155-Sugar bowl and cover of early Worcester porcelain (English, circa 1770), W. E. Benjamin ..... 70

156-Very important Chamberlain Worcester dessert service (English, circa 1790), B. N. Needham ..... 2,000

157-Very fine early Worcester dessert service (English, circa 1790), B. N. Needham ..... 475

158-Very fine Worcester ruby vase (English, circa 1830), Barnet J. Klar ..... 170

159-Important early Worcester vase and cover (English, circa 1770), W. E. Benjamin ..... 500

160-Important early Worcester vase and cover (English, circa 1770), W. E. Benjamin ..... 300

161-Teapot and cover of early Worcester porcelain (English, circa 1770), W. E. Benjamin ..... 500

162-Sugar bowl and cover of early Worcester porcelain (English, circa 1770), W. E. Benjamin ..... 70

163-Very important Chamberlain Worcester dessert service (English, circa 1790), B. N. Needham ..... 2,000

164-Very fine early Worcester dessert service (English, circa 1790), B. N. Needham ..... 475

165-Very fine Worcester ruby vase (English, circa 1830), Barnet J. Klar ..... 170

166-Important early Worcester vase and cover (English, circa 1770), W. E. Benjamin ..... 500

167-Important early Worcester vase and cover (English, circa 1770), W. E. Benjamin ..... 300

168-Teapot and cover of early Worcester porcelain (English, circa 1770), W. E. Benjamin ..... 500

169-Sugar bowl and cover of early Worcester porcelain (English, circa 1770), W. E. Benjamin ..... 70

170-Very important Chamberlain Worcester dessert service (English, circa 1790), B. N. Needham ..... 2,000

171-Very fine early Worcester dessert service (English, circa 1790), B. N. Needham ..... 475

172-Very fine Worcester ruby vase (English, circa 1830), Barnet J. Klar ..... 170

173-Important early Worcester vase and cover (English, circa 1770), W. E. Benjamin ..... 500

174-Important early Worcester vase and cover (English, circa 1770), W. E. Benjamin ..... 300

175-Teapot and cover of early Worcester porcelain (English, circa 1770), W. E. Benjamin ..... 500

176-Sugar bowl and cover of early Worcester porcelain (English, circa 1770), W. E. Benjamin ..... 70

177-Very important Chamberlain Worcester dessert service (English, circa 1790), B. N. Needham ..... 2,000

178-Very fine early Worcester dessert service (English, circa 1790), B. N. Needham ..... 475

179-Very fine Worcester ruby vase (English, circa 1830), Barnet J. Klar ..... 170

180-Important early Worcester vase and cover (English, circa 1770), W. E. Benjamin ..... 500

181-Important early Worcester vase and cover (English, circa 1770), W. E. Benjamin ..... 300

182-Teapot and cover of early Worcester porcelain (English, circa 1770), W. E. Benjamin ..... 500

183-Sugar bowl and cover of early Worcester porcelain (English, circa 1770), W. E. Benjamin ..... 70

184-Very important Chamberlain Worcester dessert service (English, circa 1790), B. N. Needham ..... 2,000

185-Very fine early Worcester dessert service (English, circa 1790), B. N. Needham ..... 475

186-Very fine Worcester ruby vase (English, circa 1830), Barnet J. Klar ..... 170

187-Important early Worcester vase and cover (English, circa 1770), W. E. Benjamin ..... 500

188-Important early Worcester vase and cover (English, circa 1770), W. E. Benjamin ..... 300

189-Teapot and cover of early Worcester porcelain (English, circa 1770), W. E. Benjamin ..... 500

190-Sugar bowl and cover of early Worcester porcelain (English, circa 1770), W. E. Benjamin ..... 70

191-Very important Chamberlain Worcester dessert service (English, circa 1790), B. N. Needham ..... 2,000

192-Very fine early Worcester dessert service (English, circa 1790), B. N. Needham ..... 475

193-Very fine Worcester ruby vase (English, circa 1830), Barnet J. Klar ..... 170

194-Important early Worcester vase and cover (English, circa 1770), W. E. Benjamin ..... 500

195-Important early Worcester vase and cover (English, circa 1770), W. E. Benjamin ..... 300

196-Teapot and cover of early Worcester porcelain (English, circa 1770), W. E. Benjamin ..... 500

197-Sugar bowl and cover of early Worcester porcelain (English, circa 1770), W. E. Benjamin ..... 70

198-Very important Chamberlain Worcester dessert service (English, circa 1790), B. N. Needham ..... 2,000

199-Very fine early Worcester dessert service (English, circa 1790), B. N. Needham ..... 475

200-Very fine Worcester ruby vase (English, circa 1830), Barnet J. Klar ..... 170

### List of Porcelains Sold.

The porcelain articles sold yesterday, with their catalogue number, description, purchaser and price, were as follows:

- 1-Pair powder-blue vases (Kang-Hsi, circa 1680), Miss H. Counihan, agent ..... \$80
- 2-Three powder-blue vases (Kang-Hsi, circa 1680), Frank Partridge ..... 325
- 3-Powder-blue saucer dish (Kang-Hsi, circa 1690), H. G. Ferguson ..... 53

TO BE SOLD BY AUCTION  
AT UNRESERVED PUBLIC SALE  
SATURDAY AFTERNOON  
FEBRUARY TWENTIETH  
AT TWO THIRTY

CARDS OF ADMISSION TO THE SALE, EACH OF WHICH WILL ADMIT ONE PERSON ONLY, MAY BE OBTAINED UPON WRITTEN APPLICATION WHICH MUST SPECIFY THE DAY OF THE SALE AS THE ADMISSIONS ON EACH DAY WILL BE LIMITED TO THE CAPACITY OF THE SALES-ROOM

ON PUBLIC EXHIBITION FROM FRIDAY, FEBRUARY TWELFTH

THE ART COLLECTIONS  
OF THE LATE  
VISCOUNT LEVERHULME  
[PART THREE]  
PORCELAINS

TO BE SOLD BY ORDER OF THE EXECUTORS  
THE RIGHT HONOURABLE WILLIAM HULME, VISCOUNT LEVERHULME  
HAROLD ROBERT GREENHALGH  
FRANCIS D'ARCY COOPER  
JOHN McDOWELL

THE ANDERSON GALLERIES  
MITCHELL KENNERLEY [PRESIDENT]  
489 PARK AVENUE AT FIFTY-NINTH STREET, NEW YORK  
1926

## CONDITIONS OF SALE

ALL BIDS TO BE PER LOT AS NUMBERED IN THE CATALOGUE.

The highest bidder to be the buyer. In all cases of disputed bids the decision of the Auctioneer shall be final.

Buyers to give their names and addresses and to make such cash payments on account as may be required, in default of which the lots purchased shall be resold immediately.

Purchases to be removed at the buyer's expense and risk within twenty-four hours from the conclusion of the sale, and the remainder of the purchase money to be paid on or before delivery, in default of which The Anderson Galleries, Incorporated, will not be responsible for any loss or damage whatever, but the lot or lots will be left at the sole risk of the purchaser, and subject to storage charges.

All lots will be placed on public exhibition before the date of sale, for examination by intending purchasers, and The Anderson Galleries, Incorporated, will not be responsible for the correctness of the description, authenticity, genuineness, or for any defect or fault in or concerning any lot, and make no warranty whatever, but will sell each lot exactly as it is, WITHOUT RECOURSE.

If accounts are not paid and purchases removed within twenty-four hours of the conclusion of the sale, or, in the case of absent buyers, when bills are rendered, any sum deposited as part payment shall be forfeited, and The Anderson Galleries, Incorporated, reserve the right to resell the lot or lots by either private or public sale, without further notice, and if any deficiency arises from such resale it shall be made good by the defaulter, together with all expenses incurred. This condition shall be without prejudice to the right of this Company to enforce the sale contract and collect the amount due without such resale, at its own option.

The Anderson Galleries, Incorporated, will afford every facility for the employment of carriers and packers by the purchasers, but will not be responsible for any damage arising from the acts of such carriers and packers.

The Anderson Galleries make no charge for executing orders for their customers and use all bids competitively, buying at the lowest price permitted by other bids.

*A Priced Copy of this Catalogue may be obtained for Two Dollars*

### THE ANDERSON GALLERIES, INC.

489 PARK AVENUE AT FIFTY-NINTH STREET, NEW YORK

TELEPHONE REGENT 0250

CATALOGUES ON REQUEST

SALES CONDUCTED BY MR. F. A. CHAPMAN, MR. A. N. BADE AND MR. E. H. L. THOMPSON

LORD LEVERHULME'S prestige as a collector is fully maintained by his porcelain. It falls, as do the remainder of his works of art, into quite distinct categories—Chinese, English, and a few Continental pieces. In so much that is fine it is invidious to single out any one item for special notice, but the Chamberlain Worcester Dessert Service, which has on each piece a beautifully painted scene from one of Shakespeare's plays with the appropriate quotation on the reverse, is not only interesting and extremely beautiful, but unique. The collection of powder-blue china too, is so comprehensive as almost to defeat its own ends by the number of pieces; each single item is rare. Anyone who has seen Lord Leverhulme's room at The Hill, furnished with gems of old satinwood, the walls hung with English eighteenth century landscapes, and decorated solely with powder-blue porcelain, will acknowledge that for pure beauty and decorative effect it would be difficult to surpass.

C. WOODWARD



FIVE KANG-HSI VASES IN POWDER-BLUE AND FAMILLE-VERTE  
[NUMBERS 1 AND 2]



KANG-HSI SAUCER DISHES IN POWDER-BLUE AND FAMILLE-VERTE  
[NUMBERS 3-6]

NUMBERS 1-163

- 1 **PAIR OF POWDER-BLUE VASES** KANG-HSI, CIRCA 1690  
Pencilled in gold; bulbous bodies, with wide circular flat rims; the rims with three fan-shaped panels, reserved in white, decorated in under-glaze red and gold. (2) *Diameter of rim, 4½ inches*

[SEE ILLUSTRATION]

- 2 **THREE POWDER-BLUE VASES** KANG-HSI, CIRCA 1690  
Pencilled in gold; cylindrical, with narrow shaped necks; with six shaped panels, reserved in white, enamelled in famille-verte with floral sprays. (One repaired) (3) *Height, 7 inches*

[SEE ILLUSTRATION]

- 3 **POWDER-BLUE SAUCER DISH** KANG-HSI, CIRCA 1690  
With a centre panel and four medallions, reserved in white, enamelled in famille-verte with flowers and landscapes. Powder-blue underneath. Mark in under-glaze blue. *Diameter, 8¾ inches*

[SEE ILLUSTRATION]

- 4 **POWDER-BLUE SAUCER DISH** KANG-HSI, CIRCA 1690  
Similar to the preceding.

[SEE ILLUSTRATION]

- 5 **POWDER-BLUE SAUCER DISH** KANG-HSI, CIRCA 1690  
Similar to the preceding.

[SEE ILLUSTRATION]

- 6 **POWDER-BLUE SAUCER DISH** KANG-HSI, CIRCA 1690  
With a centre panel and four medallions reserved in white, enamelled in famille-verte with floral sprays; with sprays of flowers in red and green underneath. (Slight crack) *Diameter, 8¾ inches*

[SEE ILLUSTRATION]

- 7 **POWDER-BLUE VASE** KANG-HSI, CIRCA 1690  
Pencilled in gold; bulbous body and pear-shaped neck; with shaped panels reserved in white, enamelled in famille-verte with floral sprays and birds; finely-chiselled ormolu mounts. (Repaired)

*Height, 9 inches*



KANG-HSI BOWL AND COVER AND TWO VASES IN POWDER-BLUE AND  
FAMILLE-VERTE

[NUMBERS 8 AND 9]

- 8 **POWDER-BLUE BOWL AND COVER** KANG-HSI, CIRCA 1690  
Pencilled in gold; with two elephant-head handles and four panels reserved in white, decorated with landscapes in brilliant famille-verte enamel. (2) *Diameter, 5 $\frac{3}{4}$  inches*

[SEE ILLUSTRATION]

- 9 **TWO POWDER-BLUE VASES** KANG-HSI, CIRCA 1690  
Pencilled in gold; cylindrical, with narrow, circular, knopped neck; with six shaped panels, reserved in white, enamelled in famille-verte with flowers. Brilliant coloring. (One repaired) (2) *Height, 8 $\frac{1}{2}$  inches*

[SEE ILLUSTRATION]

- 10 **POWDER-BLUE VASE** KANG-HSI, CIRCA 1690  
Pencilled in gold; triple-gourd shape; with shaped panels, reserved in white, decorated in famille-verte with floral sprays and birds. Mounted in ormolu. (Repaired) *Height, 9 $\frac{3}{4}$  inches*





LARGE KANG-HSI DISH IN POWDER-BLUE AND FAMILLE-VERTE  
[NUMBER 11]

11 LARGE CIRCULAR DISH IN POWDER-BLUE

KANG-HSI, CIRCA 1690

Pencilled in gold; with eight reserved panels on the rim, enamelled in famille-verte with floral sprays and the centre reserved in white with a landscape in famille-verte. Mark in under-glaze blue. (Repaired)

*Diameter, 16½ inches*

[SEE ILLUSTRATION]

12 POWDER-BLUE VASE

KANG-HSI, CIRCA 1690

Pencilled in gold; cylindrical, with narrow, circular, knopped neck; with eight shaped panels, reserved in white, enamelled in famille-verte with flowers. Brilliant coloring.

*Height, 9½ inches*



TWO KANG-HSI BOWLS AND COVERS IN POWDER-BLUE AND FAMILLE-VERTE  
 [NUMBERS 13 AND 14]

**13 POWDER-BLUE BOWL AND COVER**                      KANG-HSI, CIRCA 1690

Pencilled in gold; the bowl decorated with two shaped panels reserved in white, enamelled in famille-verte with floral sprays; the cover with a circular shaped panel, enamelled in famille-verte, with a small circular blue finial; two carved handles. (2)    *Diameter, 6 inches*

[SEE ILLUSTRATION]

**14 POWDER-BLUE BOWL AND COVER**                      KANG-HSI, CIRCA 1690

Pencilled in gold; with two shaped metal handles; decorated with rectangular panels, reserved in white, enamelled in famille-verte with floral sprays, landscapes and birds. Shaped gilt finial. (2)    *Diameter, 5½ inches*

[SEE ILLUSTRATION]



TWO KANG-HSI SAUCER DISHES AND A SMALL BOWL IN POWDER-BLUE  
AND FAMILLE-VERTE

[NUMBERS 15-17]

**15 POWDER-BLUE CIRCULAR SAUCER DISH**

KANG-HSI, CIRCA 1690

With five shaped panels reserved in white, enamelled in famille-verte with a boy holding a branch with flowers, a landscape, flowers, a lion and utensils; the back decorated with floral sprays in red and green; mark in under-glaze blue. (Slight crack) *Diameter, 10½ inches*

[SEE ILLUSTRATION]

**16 VERY FINE POWDER-BLUE CIRCULAR BOWL**

KANG-HSI, CIRCA 1690

Pencilled in gold; the outside with four shaped panels reserved in white, enamelled in famille-verte with floral sprays and utensils; the inside powder-blue, with a shaped panel enamelled with a basket of flowers. Mark in under-glaze blue. *Diameter, 7 inches*

[SEE ILLUSTRATION]

**17 POWDER-BLUE SAUCER DISH**

KANG-HSI, CIRCA 1690

Pencilled with floral sprays in gold; with five shaped panels, reserved in white, enamelled in flowers and a Ho-ho bird; the back powder-blue; mark in under-glaze blue. Brilliant coloring. (Slight chip in rim) *Diameter, 10¾ inches*

[SEE ILLUSTRATION]



KANG-HSI BOWL AND COVER AND TWO CIRCULAR PLATES IN POWDER-BLUE  
AND FAMILLE-VERTE

[NUMBERS 18-20]

- 18 **POWDER-BLUE BOWL AND COVER** KANG-HSI, CIRCA 1690  
With two elephant-head handles; decorated with four fan-shaped panels, reserved in white, with under-glaze decoration in blue of sprays of flowers; brilliant coloring. (2) *Diameter, 6 inches*

[SEE ILLUSTRATION]

- 19 **POWDER-BLUE CIRCULAR PLATE** KANG-HSI, CIRCA 1690  
Pencilled in gold; the centre with large circular panels, reserved in white, enamelled in famille-verte with flowers, rocks and insects; the rim with four cartouche-shaped panels, similarly decorated; brilliant coloring. Mark in under-glaze blue. *Diameter, 10 $\frac{3}{4}$  inches*

[SEE ILLUSTRATION]

- 20 **POWDER-BLUE CIRCULAR PLATE** KANG-HSI, CIRCA 1690  
Similar to the preceding.

[SEE ILLUSTRATION]



LARGE KANG-HSI DISH IN POWDER-BLUE AND FAMILLE-VERTE  
[NUMBER 21]

21 LARGE CIRCULAR DISH IN POWDER-BLUE

KANG-HSI, CIRCA 1690

Pencilled in gold; the centre reserved in white, enamelled in famille-verte with a lion breathing flames and a flying Ho-ho bird; the rim with eight reserved panels decorated with animals and utensils. Brilliant coloring. Decorated underneath with sprays of flowers in red and green; with under-glaze mark in blue. (Crack in rim)

*Diameter, 16½ inches*

[SEE ILLUSTRATION]

22 PAIR OF POWDER-BLUE VASES

KANG-HSI, CIRCA 1690

Pencilled in gold; cylindrical, with narrow, circular, knopped necks; with six shaped panels, reserved in white, enamelled in famille-verte with floral sprays. (One chipped) (2)

*Height, 6 inches*



TWO KANG-HSI VASES AND A SMALL BOWL IN POWDER-BLUE AND  
FAMILLE-VERTE

[NUMBERS 23-25]

- 23 **POWDER-BLUE VASE** KANG-HSI, CIRCA 1690  
Triple-gourd shape; decorated with shaped panels, reserved in white, enamelled in famille-verte with utensils, floral sprays and lions, in brilliant colors. (Chip in rim) *Height, 9½ inches*

[SEE ILLUSTRATION]

- 24 **POWDER-BLUE CIRCULAR BOWL** KANG-HSI, CIRCA 1690  
The outside decorated with shaped panels, reserved in white, enamelled in famille-verte with floral sprays and landscapes: the white inside with a circular medallion on the base, decorated in famille-verte, with, round the rim, a band of diaper decoration with reserved cartouches. Mark in under-glaze blue. (Slight crack) *Diameter, 6 inches*

[SEE ILLUSTRATION]

- 25 **POWDER-BLUE VASE** KANG-HSI, CIRCA 1690  
Pencilled in gold; pear shape, with slender neck terminating in a bulb; decorated with shaped panels reserved in white, enamelled in famille-verte with floral sprays and utensils; mounted in ormolu. *Height, 10 inches*

[SEE ILLUSTRATION]



IMPORTANT KANG-HSI VASE IN POWDER-BLUE  
AND FAMILLE-VERTE

[NUMBER 26]

- 26 **IMPORTANT VASE IN POWDER-BLUE** KANG-HSI, CIRCA 1690  
Quadrangular, slightly tapering towards the base; with circular  
shaped neck; decorated with shaped panels, reserved in white, enam-  
elled in famille-verte with landscapes and floral sprays. (Slight  
chip)

*Height, 18 $\frac{3}{4}$  inches*

[SEE ILLUSTRATION]



[NUMBER 27]

- 27 **IMPORTANT VASE IN POWDER-BLUE** KANG-HSI, CIRCA 1690  
 Pear shape; knopped neck, and circular foot; with shaped panels reserved in white, decorated in under-glaze blue with landscapes, floral sprays and utensils. Brilliant color. (Slightly repaired)

*Height, 18½ inches*

[SEE ILLUSTRATION]

- 28 **PAIR OF POWDER-BLUE VASES** KANG-HSI, CIRCA 1690  
 Triple-gourd shape; pencilled in gold; with shaped panels, reserved in white, enamelled in famille-verte of brilliant colors with floral sprays and birds. (2)

*Height, 8½ inches*

- 29 **IMPORTANT VASE IN POWDER-BLUE** KANG-HSI, CIRCA 1690  
 Oviform, with narrow circular neck; with six shaped panels, reserved in white, decorated in under-glaze blue and the rare "peach-bloom" glaze, with lions, landscapes, birds, flowers and insects. Very fine.

*Height, 18½ inches*





TWO SUPERB KANG-HSI VASES IN POWDER-BLUE AND FAMILLE-VERTE  
 [NUMBERS 30 AND 31]

30 **SUPERB POWDER-BLUE VASE** KANG-HSI, CIRCA 1690  
 Club shape: each with two quadrangular panels, reserved in white,  
 outlined in red, enameled in famille-verte with flowering plants, rocks  
 and insects. Brilliant coloring. Important. *Height, 16½ inches*

[SEE ILLUSTRATION]

31 **SUPERB POWDER-BLUE VASE** KANG-HSI, CIRCA 1690  
 Similar to the preceding.

[SEE ILLUSTRATION]

32 **TWO POWDER-BLUE VASES**

KANG-HSI, CIRCA 1690

Pencilled in gold; triple-gourd shape; with shaped panels, reserved in white, enamelled in famille-verte with floral sprays and birds; brilliant coloring; mounted in ormolu. (One repaired at neck) (2)

*Height, 10 inches*



[NUMBERS 33-35]

33 **POWDER-BLUE SPRINKLER VASE WITH PEACH-BLOOM DECORATION**

KANG-HSI, CIRCA 1690

Fine coloring, with three shaped panels, reserved in white, outlined in gold, decorated with lions in the rare "peach-bloom" glaze. Important.

*Height, 7 inches*

[SEE ILLUSTRATION]

34 **POWDER-BLUE JAR AND COVER**

KANG-HSI, CIRCA 1690

Cylindrical, with two carved handles; decorated with shaped panels, reserved in white, two with landscapes in under-glaze red, the remainder enamelled in famille-verte. (Cover chipped) (2)

*Diameter, 4½ inches*

[SEE ILLUSTRATION]

35 **POWDER-BLUE SPRINKLER VASE**

KANG-HSI, CIRCA 1690

Brilliant coloring: the slender neck with slightly outcurving lip.

*Height, 6 inches*

[SEE ILLUSTRATION]



[NUMBERS 36 AND 37]

**36 MAGNIFICENT FAMILLE-NOIRE VASE AND COVER**

KANG-HSI, CIRCA 1680

Baluster shape; the ground of mirror-black, flecked with "tongued flames" of deep rose and brilliant green; round the rim and the vase is a band of vertical stripes and, on the shoulder, a lambrequin of rouge-de-fer, outlined in green, decorated with a floral pattern reserved in white and gold. Round the body is a design of four lions, each of a different color, with brocaded balls of wheel pattern, from which proceed loops and long ends of ribbon; on the forehead of each of the lions is the mark "wang", signifying king of beasts. (2)

*Height, 24 inches*

[SEE ILLUSTRATION]

**37 MAGNIFICENT FAMILLE-NOIRE VASE AND COVER**

KANG-HSI, CIRCA 1680

Similar to the preceding. (2)

[SEE ILLUSTRATION]

**38 POWDER-BLUE VASE**

KANG-HSI, CIRCA 1690

Cylindrical; narrow, knopped neck; with eight shaped panels, reserved in white, enamelled in famille-verte with sprays of flowers. Pencilled in gold. (Neck repaired)

*Height, 10½ inches*



IMPORTANT PAIR OF KANG-HSI VASES IN FAMILLE-VERTE  
[NUMBER 39]

**39 PAIR OF IMPORTANT FAMILLE-VERTE VASES**

KANG-HSI, CIRCA 1675

Quadrangular, tapering slightly towards the base: two sides decorated with "lange lysen" figures in landscapes, and two with floral sprays and birds; the sloping shoulders in stippled green, dotted with colored flowers; the circular, incurved neck in "shagreen" with medallions containing colored flowers, with shaped panels, reserved in white, decorated with floral sprays and insects. Brilliant coloring. (One repaired on neck) (2) *Height, 18¾ inches*

[SEE ILLUSTRATION]



PAIR OF KANG-HSI JARS AND COVERS IN FAMILLE-VERTE  
[NUMBER 40]

40 PAIR OF FAMILLE-VERTE JARS AND COVERS

KANG-HSI, CIRCA 1690

Oviform; white ground, outlined with under-glaze blue; the body enamelled with ladies and children at play on a garden terrace; the neck with symbols; the domed lid with boys at play in a landscape.

(4)

*Height, 11½ inches*

[SEE ILLUSTRATION]

41 PAIR OF FAMILLE-VERTE JARS AND COVERS

KANG-HSI, CIRCA 1675

Oviform; brilliant green stippled ground, flecked with colored flowers; with shaped panels, reserved in white, enamelled with floral sprays and insects; the circular domed covers with a scarlet, green and white lambrequin. Brilliant coloring. (One cover repaired) (4)

*Height, 6½ inches*



TWO IMPORTANT KANG-HSI VASES AND COVERS IN FAMILLE-VERTE  
[NUMBERS 42 AND 43]

42 IMPORTANT FAMILLE-VERTE VASE AND COVER

KANG-HSI, CIRCA 1765

Inverted pear shape; outlined in under-glaze blue; enamelled round the base with a decoration of vertical stripes; the body with a finely executed representation of a dignitary giving audience; the shoulder with a band of stippled green, decorated with flowers and leaves in red, green, aubergine and yellow, with cartouches reserved in white, decorated with symbols; high domed cover, decorated with boys in a landscape. (2) *Height, 18 inches*

[SEE ILLUSTRATION]

43 IMPORTANT FAMILLE-VERTE VASE AND COVER

KANG-HSI, CIRCA 1765

Similar to the preceding. (Cover repaired) (2)

[SEE ILLUSTRATION]



THREE VERY FINE KANG-HSI VASES AND COVERS IN FAMILLE-VERTE  
[NUMBERS 44-46]

**44 IMPORTANT FAMILLE-VERTE VASE AND COVER**

KANG-HSI, CIRCA 1765

Inverted pear shape; with a triple band of decoration in three colors round the base; the body divided into two panels by vertical bands outlined in red, enameled with sprays of convolvulus, each panel decorated with a scene depicting a garden terrace and a lady setting out to pay a visit of ceremony. The flat cover decorated with symbols and utensils. (Very fine) (2) *Height, 15½ inches*

[SEE ILLUSTRATION]

**45 IMPORTANT FAMILLE-VERTE VASE AND COVER**

KANG-HSI, CIRCA 1765

Similar to the preceding. (2)

[SEE ILLUSTRATION]

**46 IMPORTANT FAMILLE-VERTE VASE AND COVER**

KANG-HSI, CIRCA 1765

Similar to the preceding. (2)

[SEE ILLUSTRATION]

47 **SUPERB VASE IN GREEN, YELLOW AND AUBERGINE**

KANG-HSI, CIRCA 1665

Quadrangular, tapering towards the base, the sides enamelled in clear, soft green, with a design of flowers, emblematic of the four seasons, outlined in soft Indian ink and colored ivory, green, yellow and aubergine; the slightly sloping shoulders enamelled in clear yellow, with a decoration of leaves and flowers in three colors; the circular, incurved neck with a similar decoration to that on the body. Inscribed on the base. An unusual form of decoration. (Neck repaired)

*Height, 19 inches*

[SEE ILLUSTRATION]

48 **VASE WITH FINE FLAMBE-RED GLAZE** KANG-HSI, CIRCA 1690

Baluster shape, with crackle surface; the colored glaze starting one-and-a-half inches from the top of the vase and continuing until within one-half inch from the foot, when it terminates in an uneven line, the color changing on one side into clear blue.

*Height, 10½ inches*

49 **BRONZE SHAPE VASE WITH FINE FLAMBE-RED GLAZE**

KANG-HSI, CIRCA 1670

Quadrangular, with bulbous body, on oblong foot; with two loop handles on the side; the richly colored glaze entirely covering the body, but thinning, and in some places disappearing, on the neck and handles. Important.

*Height, 12½ inches*





SUPERB KANG-HSI VASE  
IN GREEN, YELLOW AND AUBERGINE

[NUMBER 47]



VERY IMPORTANT MING INCENSE BURNER

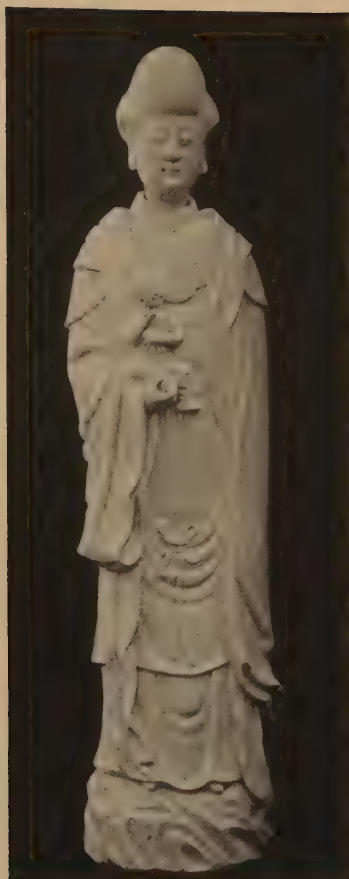
[NUMBER 50]

50 **SUPERB TRIPOD INCENSE BURNER** MING, CIRCA 1450

A fine example of three-color glaze on a pottery basis—in blue, yellow and green; the feet are grotesque masks; round the body are four dragons; on one side of the neck is a shrine with priests and lions, on the other figures of Immortals rising from clouds; the projecting rim, which is outlined with ju-i, is supported by two lions, standing on a grotesque mask on the body. (Slightly defective)

*Height, 19½ inches*

[SEE ILLUSTRATION]



[NUMBERS 51 AND 52]

**51 FINE FIGURE OF KWAN-YIN IN BLANC-DE-CHINE**

KANG-HSI, CIRCA 1680

Represented as standing on flowing water, holding a child.

*Height, 25 inches*

[SEE ILLUSTRATION]

**52 FINE FIGURE OF KWAN-YIN IN BLANC-DE-CHINE**

KANG-HSI, CIRCA 1680

Similar to the preceding. (Repaired)

[SEE ILLUSTRATION]

**53 LARGE BLUE AND WHITE BOTTLE**

KANG-HSI, CIRCA 1690

Pear shape; the ground dark blue, decorated all over with a design of peonies and foliage, reserved in white, outlined in blue. (Repaired )

*Height, 19 inches*



THREE VERY FINE BLUE AND WHITE KANG-HSI JARS  
[NUMBERS 54-56]

54 SUPERB BLUE AND WHITE "HAWTHORN" JAR

KANG-HSI, CIRCA 1680

Oviform; "cracked ice" ground in delicately graduated tones of blue; decorated with rising and falling sprays of prunus, reserved in white, outlined in blue. Carved wood cover. *Height, 8½ inches*

[SEE ILLUSTRATION]

55 FINE BLUE AND WHITE "HAWTHORN" JAR

KANG-HSI, CIRCA 1680

Oviform; "cracked ice" ground in shades of blue, decorated with prunus blossoms, reserved in white, outlined in blue. Black wood cover. *Height, 9 inches*

[SEE ILLUSTRATION]

56 FINE BLUE AND WHITE "HAWTHORN" JAR

KANG-HSI, CIRCA 1680

Almost identical with the preceding. Black wood cover.

[SEE ILLUSTRATION]

- 57 **CANISTER VASE IN BLUE AND WHITE** KANG-HSI, CIRCA 1680  
Quadrangular; each side decorated with "lang lysen" figures in a garden; the shoulders decorated with floral sprays; the small circular neck with three bands of decoration. The whole decoration in under-glaze blue on white. Mark in under-glaze blue.

*Height, 12 inches*

- 58 **CANISTER VASE IN BLUE AND WHITE** KANG-HSI, CIRCA 1680  
Almost identical with the preceding.

- 59 **BLUE AND WHITE BOTTLE** KANG-HSI, CIRCA 1700  
Bulbous body, with long, slender, knopped neck. The body decorated with hunting scenes by the light of the moon, stars and torches; the neck with flowers and foliage. (Neck slightly chipped)

*Height, 15 inches*

- 60 **BLUE AND WHITE BOTTLE** KANG-HSI, CIRCA 1700  
Similar to the preceding; the body decorated with a party of men hunting deer. (Neck repaired)

- 61 **SMALL BLUE AND WHITE SPRINKLER VASE**  
KANG-HSI, CIRCA 1700  
The body decorated with chrysanthemums and foliage; the long slender neck with water-leaves. On circular foot. All decoration in under-glaze blue on white.

*Height, 6½ inches*

- 62 **SMALL BLUE AND WHITE SPRINKLER VASE**  
KANG-HSI, CIRCA 1700  
Almost identical with the preceding.



KANG-HSI COVERED JAR IN BLUE AND WHITE

[NUMBER 63]

63 VERY FINE BLUE AND WHITE JAR AND COVER

KANG-HSI, CIRCA 1680

Cylindrical. The ground of blue "cracked ice" in softly graded tones, with four shaped panels reserved in white and decorated in blue with flowers, symbols and utensils, surrounded by prunus blossoms reserved in white; the flat lid, with plain blue finial, similarly decorated. (2)

*Height, 6¾ inches*

[SEE ILLUSTRATION]

64 **BLUE AND WHITE CIRCULAR BOWL** KANG-HSI, CIRCA 1700  
The base surrounded with a moulded design of flower petals, each decorated with a chrysanthemum, above which are panels decorated alternately with boys at play and a lady in a garden; the base of the inside decorated with a circular medallion, containing a seated figure of a lady holding a spray of blossom, the rim with a broad band of diaper design. Inscription on base. The whole decoration in under-glaze blue on white. *Diameter, 7¾ inches*

65 **BLUE AND WHITE CIRCULAR BOWL** KANG-HSI, CIRCA 1700  
Almost identical with the preceding.

66 **FINE BLUE AND WHITE VASE** KANG-HSI, CIRCA 1700  
Pear shape, with long slender neck; the body divided into six panels, each decorated with a design of figures or utensils; the neck with water-leaves; on circular foot. *Height, 10½ inches*

67 **FINE VASE IN BLUE AND WHITE** KANG-HSI, CIRCA 1680  
Pear shape, with long, slender, knopped neck; the ground clear white, beautifully decorated in blue with symbols. (Neck slightly chipped) *Height, 12 inches*

68 **FINE BLUE AND WHITE VASE AND COVER** KANG-HSI, CIRCA 1670  
Oviform; white ground, the body decorated with a company of mounted warriors, in a landscape, very finely executed, edged with bands of shaded blue, with prunus reserved in white. The flat, original cover decorated with a medallion edged with a lambrequin, enclosing a basket of flowers. (Repaired) (2) *Height, 24 inches*

69 **VERY FINE BLUE AND WHITE BEAKER** KANG-HSI, CIRCA 1690  
The body divided into vertical panels by bands of diaper decoration in blue and white; the panels with a white ground, finely painted in blue with flowers and insects; round the rim is a band of "cracked ice" and prunus, from which depends a "brocade" lambrequin in blue and white; a similar decoration round the base. Color, decoration and glaze fine. *Height, 19 inches*  
This and the following four numbers form an important garniture.

**70 VERY FINE BLUE AND WHITE BEAKER**

KANG-HSI, CIRCA 1690

Similar to the preceding.

This, with the preceding beaker and the three following vases and covers, forms an important garniture.

**71 FINE BLUE AND WHITE VASE AND COVER**

KANG-HSI, CIRCA 1690

Baluster shape; similar decoration to the preceding. (2)

This vase, with the two preceding and the two following numbers, forms an important garniture.

**72 FINE BLUE AND WHITE VASE AND COVER**

KANG-HSI, CIRCA 1690

Similar to the preceding. (Repaired) (2)

This, with the three preceding numbers and the following, forms an important garniture.

**73 FINE BLUE AND WHITE VASE AND COVER**

KANG-HSI, CIRCA 1690

Similar to the preceding. (Repaired) (2)

This vase, with the four preceding numbers, forms an important garniture.

**74 BLUE AND WHITE "HAWTHORN" JAR AND COVER**

KANG-HSI, CIRCA 1700

Inverted pear shape: the ground "cracked ice" in shaded blue, decorated with rising and falling sprays of prunus blossoms, reserved in white; original cover. (Cover repaired) (2)

From the Collection of the Right Hon. Lord Ribblesdale.

*Height, 10½ inches*

**75 BLUE AND WHITE "HAWTHORN" JAR AND COVER**

KANG-HSI, CIRCA 1700

Almost identical with the preceding. (Cover repaired) (2)

From the Collection of the Right Hon. Lord Ribblesdale.



- 76 **FINE BLUE AND WHITE GARNITURE** KANG-HSI, CIRCA 1680  
Comprising three vases and covers and two beakers; white ground;  
decorated with figures in landscapes in blue. (One beaker and three  
covers repaired) (8)

*Height of vases, 20 inches; of beakers, 18 inches*

- 77 **FINE BLUE AND WHITE GARNITURE** KANG-HSI, CIRCA 1680  
Comprising three jars and covers and two beakers; white ground;  
the decoration of shaped vertical panels, outlined in blue, enclosing  
flowering trees and plants; the tops and bases outlined with bands  
of blue, with peonies and foliage reserve in white. (One cover and  
one beaker repaired) (8)

From the Salting Collection.

*Height of jars, 12½ inches; of beakers, 10¾ inches*

- 78 **TALL BLUE AND WHITE BEAKER** KANG-HSI, CIRCA 1700  
The ground blue, decorated with chrysanthemums and foliage re-  
served in white; with six shaped panels reserved in white, outlined  
with blue, decorated in blue with floral sprays, birds, symbols and  
utensils.

*Height, 20½ inches*

- 79 **TALL BLUE AND WHITE BEAKER** KANG-HSI, CIRCA 1700  
Almost identical with the preceding. (Repaired)

- 80 **LARGE BLUE AND WHITE CIRCULAR DISH**

KANG-HSI, CIRCA 1700

Wide flat rim with a decoration of chrysanthemums and foliage and  
peacocks, with four cartouches, reserved in white, enclosing plants.  
The ground of the centre a fine diaper pattern in blue and white,  
with eight shaped panels, decorated with floral sprays, radiating  
from a shaped medallion decorated with a spray of tree peony and  
lotus. The rim decorated underneath with finely executed symbols.  
"Fungus" mark.

*Diameter, 18½ inches*

- 81 **LARGE BLUE AND WHITE CIRCULAR DISH**

KANG-HSI, CIRCA 1700

Similar decoration to the preceding.

*Diameter, 21 inches*



TWO KANG-HSI JARS AND COVERS IN FINE BLUE AND WHITE  
[NUMBERS 82 AND 83]

- 82 **BLUE AND WHITE JAR AND COVER** KANG-HSI, CIRCA 1690  
Inverted pear shape; decorated in under-glaze blue on white with a party of equestrian figures in a landscape; the domed covers with boys at play. "Leaf" mark on base. (2) *Height, 11 inches*

[SEE ILLUSTRATION]

- 83 **BLUE AND WHITE JAR AND COVER** KANG-HSI, CIRCA 1690  
Almost identical with the preceding. (2)

[SEE ILLUSTRATION]

84 **BLUE AND WHITE CYLINDRICAL VASE** KANG-HSI, CIRCA 1680  
The base and top decorated with "brocade" vandykes; the body very  
finely painted with floral sprays. "Musical instrument" mark on  
base, denoting that it was intended for religious worship. (Neck  
repaired) *Height, 12 inches*

85 **BLUE AND WHITE CYLINDRICAL VASE** KANG-HSI, CIRCA 1680  
Almost identical with the preceding. (Neck very slightly repaired)

86 **FINE BLUE AND WHITE JAR AND COVER**  
KANG-HSI, CIRCA 1680  
The ground, in under-glaze blue "cracked ice" with many gradua-  
tions of tone, decorated with rising sprays of prunus blossom re-  
served in white. Cylindrical. (2) *Height, 7 inches*

87 **FINE BLUE AND WHITE GARNITURE** KANG-HSI, CIRCA 1680  
Comprising three covered vases and two beakers; white ground; the  
decoration a series of moulded, vertical panels, enclosing finely ex-  
ecuted landscapes in blue. (One vase and one beaker repaired, one  
beaker chipped) (8)  
*Height of beakers, 16½ inches; of vases, 19½ inches*



TWO KANG-HSI VASES IN BLUE AND WHITE

[NUMBERS 88 AND 89]

- 88 **BLUE AND WHITE VASE** KANG-HSI, CIRCA 1700  
Pear shape; the body decorated with a design of chrysanthemums and foliage, on the top of which is a brocaded pattern. The slender neck decorated with water-leaves; a narrow band of decoration on the inside of the rim. The entire decoration in under-glaze blue on white. "Fungus" mark. *Height, 9 $\frac{3}{4}$  inches*

[SEE ILLUSTRATION]

- 89 **BLUE AND WHITE VASE** KANG-HSI, CIRCA 1700  
Almost identical with the preceding.

[SEE ILLUSTRATION]

- 90 **BLUE AND WHITE GARNITURE** KANG-HSI, CIRCA 1700  
Three small jars, with slender knopped necks, and two small vases and covers, decorated in under-glaze blue on white with flowers and foliage; with six moulded panels, outlined in blue, decorated with "lange lysen" figures and flowering plants. "Leaf" mark. (Three pieces repaired) (7) *Height, 7 inches*

- 91 **LARGE BLUE AND WHITE FISH BOWL** CHIEN-LUNG, CIRCA 1780  
Circular; blue waved ground, with flowers and foliage reserved in white. *Height, 19 inches; diameter, 26 inches*

- 91A **EWER IN CAFE-AU-LAIT AND BLUE AND WHITE** KANG-HSI, CIRCA 1700  
The bulbous body in café-au-lait moulded in spiral flutes; the shoulder, slender neck and "lip" in white, with a decoration of blossoms and foliage in blue. (Repaired) *Height, 8½ inches*

- 92 **BLUE AND WHITE FLOWER BOWL** KANG-HSI, CIRCA 1690  
Rectangular, with moulded sides and shaped edge, decorated in blue on white with landscapes and floral sprays. (Repaired) *Size, 9½ inches square*

- 93 **PAIR OF TEACUPS AND SAUCERS** KANG-HSI, CIRCA 1700  
The insides decorated with red, blue and green; the outsides with shaped panels and sprays of prunus in green, yellow, white and aubergine in a ground of mirror-black. "Fungus" mark. (4)

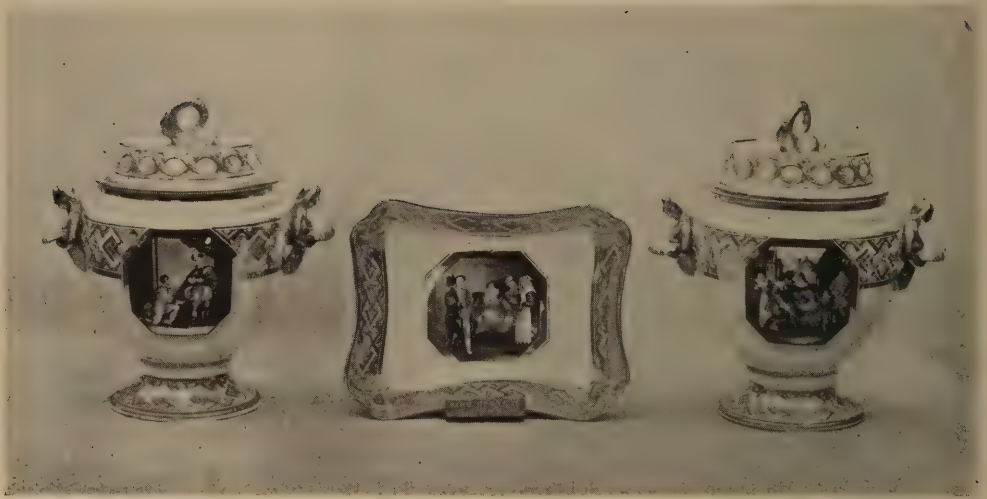
- 94 **WINE EWER** CHIEN-LUNG, CIRCA 1760  
Porcelain, enamelled all over, in the manner of Canton enamel upon copper, with a design of flowers and emblems in various colors upon an opaque pink ground; the spout rising from an elephant's head; the interior and base turquoise-blue glaze; red seal mark. *Height, 7¾ inches*

- 95 **VERY IMPORTANT EARLY WORCESTER VASE AND COVER**  
 ENGLISH, CIRCA 1770  
 Hexagonal; scale-blue ground, decorated with gold, with shaped panels reserved in white, decorated in the Hizen manner with exotic birds and butterflies; high domed cover, with similar decoration. "Chinese" mark in blue; Dr. Wall period. Finest quality and condition. (2) *Height, 15 inches*  
 [SEE ILLUSTRATION]
- 96 **IMPORTANT EARLY WORCESTER VASE AND COVER**  
 ENGLISH, CIRCA 1770  
 Hexagonal; scale-blue ground, decorated with gold, with shaped panels, reserved in white, decorated in the Hizen manner in red, blue, green and gold, with exotic flowers and birds. High domed cover, decorated in a similar manner. "Chinese" square mark in blue; Dr. Wall period. Finest quality and condition. (2) *Height, 10 inches*  
 [SEE ILLUSTRATION]
- 97 **IMPORTANT EARLY WORCESTER VASE AND COVER**  
 ENGLISH, CIRCA 1770  
 Similar to the preceding. (Hair-crack in base) (2)  
 [SEE ILLUSTRATION]
- 98 **TEAPOT AND COVER OF EARLY WORCESTER PORCELAIN**  
 ENGLISH, CIRCA 1770  
 Scale-blue ground, with panels reserved in white, outlined with gold scrolls, decorated in the Hizen manner with exotic birds and insects in colors. "Chinese" square mark in blue; Dr. Wall period. (Repaired) (2) *Height, 5½ inches*
- 99 **SUGAR BOWL AND COVER OF EARLY WORCESTER PORCELAIN**  
 ENGLISH, CIRCA 1770  
 Circular; scale-blue ground; panels reserved in white, outlined in gold scrolls, decorated in the Hizen manner with flowers. Crescent mark in blue; Dr. Wall period. (Finial repaired) (2) *Height, 4½ inches*



THREE VERY IMPORTANT EARLY WORCESTER COVERED VASES

[NUMBERS 95-97]



PART OF AN EARLY WORCESTER DESSERT SERVICE DECORATED WITH  
SCENES FROM SHAKESPEARE

[NUMBER 100]

100 **VERY IMPORTANT CHAMBERLAIN WORCESTER DESSERT SERVICE**

ENGLISH, CIRCA 1790

White, lavishly decorated with very fine quality gold; each piece decorated with a beautifully painted scene from one of Shakespeare's plays, identified on the reverse, the appropriate quotation being added. Inscribed in addition: "Chamberlains Worcester, Manufacturers to their Royal Highnesses, The Prince of Wales and Duke of Cumberland." Comprising: Pair of wine coolers, liners and covers. (One handle chipped); Oblong fruit compotier on foot; Pair of circular preserve dishes, ladles, covers and stands; Two oval dishes; Two kidney dishes; Four shell dishes; Four square dishes; Twenty-three plates (two repaired). Decoration and condition of the highest quality. Probably unique. (50)

[SEE ILLUSTRATION]



101 **VERY FINE EARLY WORCESTER DESSERT SERVICE**

ENGLISH, CIRCA 1790

White ground; decorations of arabesques in gilt; each piece with the coat-of-arms or crest of the Prendergast family.

Comprising: Oval fruit dish with coat-of-arms in centre, on separate oval plinth, supported by gryphon and fluted pillars; Pair of oval fruit dishes, smaller (one repaired); Two tall preserve dishes, covers and stands, painted with shellfish, flowers and sporting subjects (one base cracked); Pair of shell-shaped fruit dishes; Six plates, painted with portraits of Indian princes, named on reverse; Six plates painted with landscapes, some identified on reverse; Five plates painted with flowers, birds, shell-fish and a tiger (one cracked). Inscribed on back: "Barr, Flight and Barr, Royal Porcelain Works, Worcester. London House, Flight and Barr, Coventry Street. Established 1751. Manufacturers to Their Majesties, Prince of Wales and Royal Family." A Crown and "B. F. B." engraved in the paste. Finest quality and condition. (28)

102 **VERY FINE WORCESTER RUBY VASE** ENGLISH, CIRCA 1830

Campana shape; the ground ruby color, decorated in white and gold; on each side a panel, framed in gilt, beautifully painted with a bouquet of flowers in natural colors. Gilt handles terminating in leaves and berries in relief. Inscribed on base: "Flight, Barr and Barr, Royal Porcelain Works, Worcester. London. . . Coventry Street." Finest quality.

*Height, 16 inches*

103 **FINE WORCESTER RUBY VASE** ENGLISH, CIRCA 1830

Oviform; the ground ruby, with white and gold decoration; on each side a panel, beautifully painted with flowers; gold "pearled" handles from the shoulder to the rim; circular foot on square base. Finest quality and condition. Inscribed on base: "Flight, Barr and Barr, Royal Porcelain Works, Worcester. London House, 1, Coventry Street."

*Height, 16 inches*

104 **FINE WORCESTER RUBY VASE** ENGLISH, CIRCA 1830

Similar to the preceding.



FINE WORCESTER VASE IN BLUE AND GOLD  
[NUMBER 105]

105 FINE WORCESTER VASE IN BLUE AND GOLD

ENGLISH, CIRCA 1800

With two gilt scroll handles; on square base; the body decorated with exotic birds and flowers in the Hizen manner. *Height, 20 inches*

[SEE ILLUSTRATION]

**106 FINE WORCESTER VASE** ENGLISH, CIRCA 1830  
Campana shape; white ground, richly decorated with gold; two gilt handles terminating in leaves and berries; on square bases; painted with English landscapes, identified on the base. Inscribed on base: "Flight, Barr and Barr, Royal Porcelain Works, Worcester. London House, 1, Coventry Street." *Height, 13½ inches*

**107 FINE PAIR OF WORCESTER VASES** ENGLISH, CIRCA 1830  
En suite with the preceding. (One repaired) (2)  
*Height, 19 inches*

**108 FINE WORCESTER VASE** ENGLISH, CIRCA 1830  
Flattened campana shape; two handles terminating in berries in relief; on square base; deep blue ground, with decoration in white and gold; shaped panels reserved in white, outlined in gilt scrolls, decorated with flowers, birds and insects. Mark on base, engraved Crown and "F.B.B." (Slight crack) *Height, 16 inches*

**109 PAIR OF WORCESTER CHINA WALL POCKETS** ENGLISH, CIRCA 1800  
Gros-bleu ground, with decoration of white and gold; with panels reserved in white, painted with flowers and birds. (One slightly repaired) (2) *Height, 7½ inches*



TWO PLATES FROM THE FAMOUS NELSON SERVICE  
OF WORCESTER PORCELAIN

[NUMBERS 110 AND 111]

**110 PLATE FROM THE FAMOUS NELSON SERVICE OF WORCESTER PORCELAIN**

ENGLISH, 1798-99

From the celebrated dinner service of old Worcester porcelain, presented by the British Nation to Lord Nelson, "The Hero of the Nile", by whom it was bequeathed to King William IV, who presented it to Lord Frederick FitzClarence, from whom it was acquired by the Earl of Erroll, who subsequently sold it at Christie's, when these plates were acquired. Each piece in the service was painted with a portrait of Lady Hamilton as "Hope" in varied attitudes on the seashore, a ship in the distance; the border gros-bleu and gold. The mark, a Crown, "Flight" and a crescent in blue.

*Diameter, 9¾ inches*

[SEE ILLUSTRATION]

**111 PLATE FROM THE FAMOUS NELSON SERVICE OF WORCESTER PORCELAIN**

ENGLISH, 1798-99

Similar to the preceding.

[SEE ILLUSTRATION]



RARE AND IMPORTANT CHELSEA FIGURE  
[NUMBER 112]

112 FINE AND IMPORTANT CHELSEA FIGURE      ENGLISH, 1765

A finely modelled figure of a youth, wearing knee-breeches, a brocaded coat with a cloak and a hat with plumes, holding in his right hand a posy, standing against a tree trunk with flowers in relief; on a scrolled plinth, decorated with blue and gold. Inscribed on the base: "George Holmes did this figer 1765". (Very slightly defective)

*Height, 10<sup>3</sup>/<sub>4</sub> inches*

[SEE ILLUSTRATION]

113 VERY FINE PAIR OF CHELSEA ARBOR CANDLESTICKS

ENGLISH, CIRCA 1750

Designed as figures of a youth and a maiden, each holding a bird, in Watteau costume of rich coloring, standing against a background of flowers and foliage in high relief; on scrolled plinths, decorated in green and gold; the shaped nozzles in white, blue and gold. Red anchor mark. (2)

*Height, 13 inches*

114 VERY FINE PAIR OF CHELSEA ARBOR CANDELABRA

ENGLISH, CIRCA 1750

A maiden, in low bodice, and rose-colored skirt hooped up over a brocaded petticoat, reclining on a balcony, holding in her left hand a bird-cage, in her right hand, a posy of flowers; a lamb by her side. A youth, in rose-colored breeches, a flowered waistcoat and a hat with plumes, leaning on a balcony, holding a dove on his knee, with a dog seated at his feet. Both figures against a background of flowers and foliage in relief; on scrolled plinths in white and gold; with two candle nozzles on each. (Slightly defective) (2)

*Height, 11½ inches*



VERY FINE PAIR OF EARLY CHELSEA ARBOR CANDELABRA  
[NUMBER 115]

115 VERY FINE PAIR OF CHELSEA ARBOR CANDELABRA

ENGLISH, CIRCA 1750

Similar in design to the preceding, but with the coloring different.  
(Slightly defective) (2) *Height, 11½ inches*

[SEE ILLUSTRATION]



IMPORTANT EARLY CHELSEA FIGURES OF JUPITER AND JUNO  
[NUMBERS 116 AND 117]

**116 IMPORTANT FIGURE OF JUPITER IN CHELSEA PORCELAIN**

ENGLISH, CIRCA 1780

A finely modelled figure, wearing a crown and a brocaded robe; holding in his right hand the thunderbolt; the eagle by his side. On a scrolled plinth, decorated with green and gold. (Repaired)

[SEE ILLUSTRATION]

*Height, 17 inches*

**117 IMPORTANT FIGURE OF JUNO IN CHELSEA PORCELAIN**

ENGLISH, CIRCA 1780

A finely modelled figure, in richly brocaded crimson robe, with a flowing blue cloak and a crown from which depends a veil; holding in her left hand a scroll, caressing with her right the neck of a peacock at her side; on a scrolled plinth, decorated in green and gold. (Slightly repaired)

[SEE ILLUSTRATION]

*Height, 18 inches*



118 **VERY FINE CHELSEA PORCELAIN GROUP**

ENGLISH, CIRCA 1760

Europa and the Bull; Europa represented in a classical gown, seated on the bull, which is wreathed in garlands of flowers. On a scrolled white and gold plinth.

*Height, 12½ inches*

119 **CHELSEA VASE**

ENGLISH, CIRCA 1780

Oviform, with shaped neck, circular foot and two scroll handles; the ground a deep rose color, decorated lavishly with gold; the body finely painted with a scene representing "The Judgment of Solomon".  
(Repaired)

From the Robinson Collection, 1923.

*Height, 7½ inches*

120 **FEMALE BUST IN CHELSEA PORCELAIN** ENGLISH, CIRCA 1780

Finely modelled head and shoulders, with rose-colored drapery caught over one shoulder by a blue ribbon; on a shaped plinth; red anchor mark. (Repaired at back)

*Height, 4¾ inches*



FINE PAIR OF VASES IN EARLY CROWN DERBY PORCELAIN  
[NUMBER 121]

- 121 FINE PAIR OF CROWN DERBY VASES      ENGLISH, CIRCA 1790  
Campana shape; dark blue ground, with white and gold decoration; each vase having on one side a beautifully painted English landscape, identified on the base, and, on the reverse, a bouquet of flowers in their natural colors. Mark on base, Crown and "Derby" in red. (2)      *Height, 13 inches*

[SEE ILLUSTRATION]

- 122 PAIR OF CROWN DERBY VASES      ENGLISH, CIRCA 1790  
Oviform; white ground, decorated in gold; with swan handles in white and gold; the bodies painted on one side with Chinese figures; on the other with bunches of flowers. Mark on base, Crown and "D" in red. (Slightly chipped) (2)  
From the Robson Collection, 1923.      *Height, 10 inches*



PAIR OF EARLY CROWN DERBY VASES  
[NUMBER 123]

- 123 **PAIR OF CROWN DERBY VASES** ENGLISH, CIRCA 1790  
Oviform, with handles formed of cupids riding upon dolphins; salmon-pink ground, decorated with white and gold; round the bodies a band, finely gilt, painted with flowers. Fine quality and condition.  
(2)

From the Robson Collection, 1923.

*Height, 10 inches*

[SEE ILLUSTRATION]

- 124 **FINE CROWN DERBY VASE** ENGLISH, CIRCA 1790  
Campana shape; white ground, with decoration of arabesques in gilt; two shaped acanthus handles; the body finely painted with flowers; mark on base, Crown and "D" in red. (Base chipped)  
From the Robson Collection, 1923. *Height, 13 inches*



SET OF THREE EARLY CROWN DERBY VASES

[NUMBER 125]

- 125 **SET OF THREE CROWN DERBY VASES**      ENGLISH, CIRCA 1790  
 Campana shape, one larger than the other two; cherry-colored ground, richly gilt, with snake handles; each painted with a landscape panel and a bird, which is identified on the base. Crown and "D" in red on base. (Two chipped on base) (3)  
 From the Robson Collection, 1923.      *Height, 7½ and 6½ inches*

[SEE ILLUSTRATION]

- 126 **VERY FINE GROUP IN DERBY BISCUIT PORCELAIN**      ENGLISH, CIRCA 1770  
 A tree with foliage in high relief, round the base of which are three cupids, one with a musical instrument, one with a dove, and a dog by his side, the third with a basket of flowers. Exquisite workmanship. Inscribed on base, "No. 252".      *Height, 11 inches*
- 127 **FINE FIGURE OF BOY IN DERBY BISCUIT PORCELAIN**      ENGLISH, CIRCA 1770  
 To represent "Summer"; a smiling boy, holding a bunch of flowers to his face. Inscribed on base, "No. 123". Mark, Crown and "D" engraved in paste.      *Height, 11 inches*

- 128 **FINE FIGURE OF BOY IN DERBY BISCUIT PORCELAIN**  
 ENGLISH, CIRCA 1780  
 To represent Winter; a smiling boy, resting one knee on a tree trunk, carrying a bundle of faggots. Inscribed on base, "No. 123. First size". Mark, Crown and "D" engraved in paste.  
*Height, 10 inches*
- 129 **FINELY MODELLED FIGURE OF WILLIAM PITT IN DERBY BISCUIT PORCELAIN**  
 ENGLISH, CIRCA 1785  
 William Pitt, 1759-1806, the famous English statesman, was Chancellor of the Exchequer in 1782 and Prime Minister, at the age of twenty-four, in 1783. He is represented as seated in an armchair, one knee crossed over the other, the hands outstretched as if in argument.  
*Height, 7½ inches*
- 130 **FINELY MODELLED FIGURE OF WILLIAM WILBERFORCE IN DERBY BISCUIT PORCELAIN**  
 ENGLISH, CIRCA 1785  
 William Wilberforce, 1759-1833, the great philanthropist and parliamentary leader for the cause of the abolition of slavery. He is represented seated in an armchair, the left hand resting on a book, the right hand holding a spyglass; under the chair is a pile of books and a scroll inscribed "Abolition Slave Bill".  
*Height, 7 inches*
- 131 **FINELY MODELLED FIGURE OF MRS. MACAULAY IN DERBY BISCUIT PORCELAIN**  
 ENGLISH, CIRCA 1780  
 Mrs. Catherine Macaulay, 1731-1791, was a famous historian and controversialist; she visited North America in 1784, and stayed ten days with Washington in 1785. She is represented as seated in an armchair, one foot on a footstool; her left hand resting on the arm of the chair, her right hand holding a vinaigrette; dressed in a high-waisted gown, with a shawl draped round her shoulders and a high-crowned bonnet, tied under her chin.  
*Height, 7 inches*

**132 FINELY MODELLED FIGURE OF CHARLES JAMES FOX IN  
DERBY BISCUIT PORCELAIN** ENGLISH, CIRCA 1780

Charles James Fox, 1749-1806, the famous English statesman and orator; he opposed North's American policy in 1774 and supported the repeal of the tea duty. Represented as seated in an armchair, holding a scroll in his left hand. (Base cracked) *Height, 8 inches*

**133 FIGURE OF A LADY IN DERBY BISCUIT PORCELAIN**

ENGLISH, CIRCA 1780

A lady, in a dress with panniers and a lace-edged apron, seated on a chair, playing with a dog, which she holds on her knee. (Repaired at neck) *Height, 5 $\frac{3}{4}$  inches*

**134 PAIR OF SEATED FIGURES IN BISCUIT PORCELAIN**

ENGLISH, CIRCA 1770

A lady in a dress richly trimmed with lace, feeding a cat seated on her knee; a gentleman, in knee breeches, tail coat and a three-cornered hat, with a dog dressed up in a coat and hat. Mark, a triangle enclosing crossed swords, engraved on the base. (One figure slightly repaired) (2) *Height, 5 inches*

**135 SMALL VASE IN DERBY BISCUIT PORCELAIN**

ENGLISH, CIRCA 1780

In the shape of a classic urn, with two loop handles; wreathed with garlands of flowers in high relief. Inscribed on base, "No. 116". Mark, Crown and "D" engraved in the paste. (One handle slightly repaired) *Height, 7 inches*



FINE EARLY WEDGWOOD PLAQUE  
[NUMBER 136]

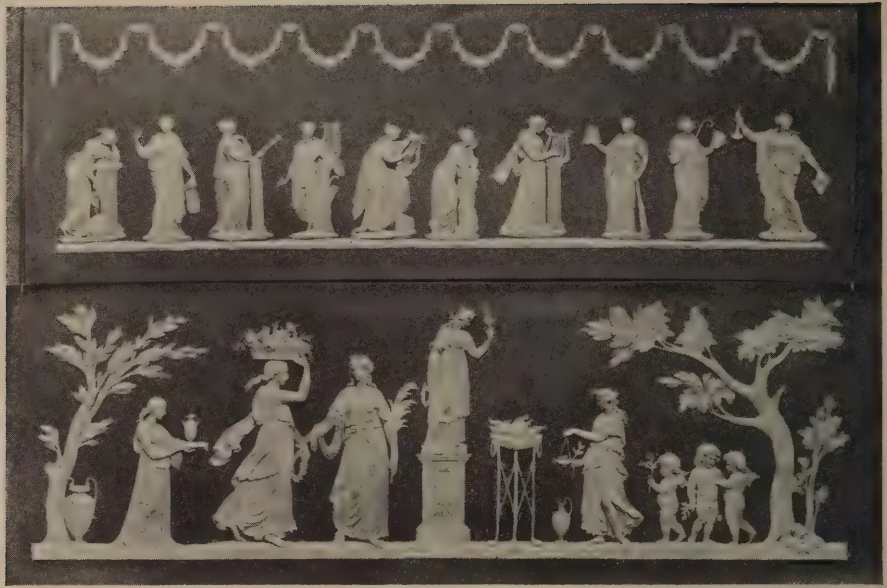
- 136 **FINE WEDGWOOD PLAQUE** ENGLISH, CIRCA 1780  
Blue jasper; decorated in cameo in very high relief with a satyr and two nymphs placing a thermal statue of a satyr on a square base.  
*Height, 8½ inches; width, 12½ inches*

[SEE ILLUSTRATION]

- 137 **WEDGWOOD PORTRAIT MEDALLION** ENGLISH, CIRCA 1780  
Bust portrait of a man in wig and coat with ruffles in white-cameo on blue jasper. Stamped "Wedgwood" on reverse. (Slight crack)  
*Height, 5½ inches; width, 4½ inches*

- 138 **FINE VASE IN BLUE AND WHITE WEDGWOOD CHINA** ENGLISH, CIRCA 1780  
Urn shape; with two loop handles; decorated in the classical manner with white on blue jasper; the body beautifully decorated in white cameo with scenes depicting the childhood of Bacchus. (Repaired)  
*Height, 18½ inches*

- 139 **FINE PEDESTAL IN BLUE AND WHITE WEDGWOOD CHINA** ENGLISH, CIRCA 1780  
Circular; in blue jasper, decorated in the classical manner with white cameo; the body decorated with two scenes depicting the birth of Achilles.  
*Height, 10 inches*



TWO FINE EARLY WEDGWOOD PLAQUES IN GREEN AND WHITE JASPER  
[NUMBERS 140 AND 141]

- 140 **FINE WEDGWOOD PLAQUE** ENGLISH, CIRCA 1780  
Green jasper; with a decoration in white cameo of Apollo and the  
Nine Muses. *Height, 5½ inches; width, 17½ inches*

[SEE ILLUSTRATION]

- 141 **FINE WEDGWOOD PLAQUE** ENGLISH, CIRCA 1780  
Pale green jasper; with a beautiful decoration in white cameo of  
nymphs and cherubs making a sacrifice to Flora. *Height, 6½ inches; width, 19 inches*

[SEE ILLUSTRATION]

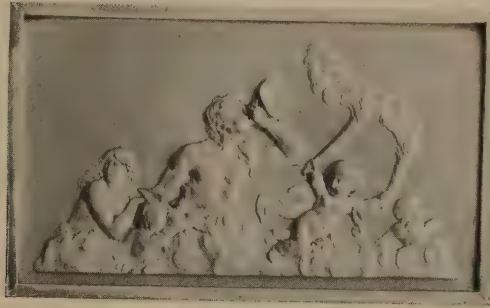
- 142 **FINE WEDGWOOD PLAQUE** ENGLISH, CIRCA 1780  
Black basalt; with a decoration in white cameo of four groups of  
cherubs representing the Arts and Sciences. *Height, 5¾ inches; width, 17½ inches*

- 143 **PEDESTAL IN BLUE AND WHITE WEDGWOOD CHINA** ENGLISH, CIRCA 1790  
Square, with moulded top and base; decoration in the classical man-  
ner in white on blue jasper; a panel on each side decorated with a  
cupid in white cameo. *Height, 8 inches*



- 144 **PEDESTAL IN BLUE AND WHITE WEDGWOOD CHINA**  
ENGLISH, CIRCA 1790  
Similar to the preceding. (Base slightly chipped)

- 145 **PEDESTAL IN BLUE AND WHITE WEDGWOOD CHINA**  
ENGLISH, CIRCA 1790  
Similar to the preceding. (Slight crack)



FINE EARLY WEDGWOOD PLAQUE  
[NUMBER 146]

- 146 **FINE WEDGWOOD PLAQUE** ENGLISH, CIRCA 1780  
Blue jasper; decorated in white cameo in very high relief with "A Marine Triumph". Marked "Wedgwood" on reverse.

*Height, 8 inches; width, 13½ inches*

[SEE ILLUSTRATION]

- 147 **FINE WEDGWOOD PLAQUE IN BLACK BASALT** ENGLISH, CIRCA 1780  
Decorated with figures in high relief in a bacchanalian procession, led by a cherub on a goat. *Height, 8 inches; width, 19½ inches*

- 148 **WEDGWOOD OVAL PLAQUE IN GREEN JASPER** ENGLISH, CIRCA 1780  
Decorated in white cameo, in high relief, with a figure of a Roman orator. *Height, 10½ inches; width, 8 inches*

- 149 **BLUE AND WHITE OVAL MEDALLION BY TURNER** ENGLISH, CIRCA 1780  
Made by Turner at the Shelton factory in the manner of Wedgwood; blue jasper ground, with a decoration in white cameo depicting Venus and two amorini at an altar; in gilt metal frame; stamped "Turner" on the reverse. *Height, 5 inches; width, 7 inches*



SPECIMENS FROM THREE DESSERT SERVICES IN VERY FINE OLD SEVRES  
PORCELAIN

[NUMBERS 150-152]

150 **VERY FINE DESSERT SERVICE IN OLD SEVRES PORCELAIN  
OF THE FIRST ROYAL EPOCH** FRENCH, CIRCA 1770

In turquoise-blue and gold, with panels reserved in white, painted with amorini and sprays of flowers. Comprising four shaped square dishes, an oval dish, and twelve plates, all with date marks and marks of painters. (One plate chipped) (17)

[SEE ILLUSTRATION]

151 **VERY FINE DESSERT SERVICE IN OLD SEVRES PORCELAIN  
OF THE FIRST ROYAL EPOCH** FRENCH, CIRCA 1770

With similar decoration to the preceding. Comprising two sucriers and covers, two shaped dishes and twelve plates, all with date marks and marks of painters. (18)

[SEE ILLUSTRATION]

152 **VERY FINE DESSERT SERVICE IN OLD SEVRES PORCELAIN  
OF THE FIRST ROYAL EPOCH** FRENCH, 1770

With similar decoration to the preceding. Comprising four circular, shaped dishes (one repaired), a shaped oval dish, and twelve plates; all with date marks and the marks of painters. (17)

[SEE ILLUSTRATION]

- 153 **PAIR OF OLD SEVRES SUCRIERS AND COVERS** FRENCH, 1778  
 Boat shape, with stands and covers; turquoise-blue ground with decoration in gold; with shaped medallions reserved in white, finely painted with figures in Watteau costume, by Thevenet, Senior. Mark in blue of 1778. (One stand repaired) (6)  
*Height, 4½ inches; width, 9 inches*
- 154 **FINE EWER AND BOWL IN OLD SEVRES PORCELAIN** FRENCH, 1770  
 Turquoise-blue ground, with decoration in rich gold; on the outside of the bowl three shaped panels reserved in white, painted with amorini; on the inside a deep rim of turquoise-blue with three white panels painted with birds and flowers; the base white, painted with a landscape with exotic birds. The ewer with two interlaced handles of white and gold; in the front a shaped medallion painted with amorini. Date mark of 1770. Painted by Tandart. (Bowl cracked) (2)  
*Height of ewer, 9½ inches; diameter of bowl, 13 inches*
- 155 **PAIR OF FINE SEVRES VASES MOUNTED IN ORMOLU** FRENCH, CIRCA 1780  
 In turquoise-blue and gold; with shaped panels reserved in white, painted with figures in Watteau costume, flowers and birds; circular porcelain covers, with ormolu finials. Beautifully chiselled mounts. (2)  
*Height, 10 inches*
- 156 **PAIR OF FINE VASES AND COVERS IN SEVRES PORCELAIN OF THE FIRST ROYAL EPOCH** FRENCH, 1753  
 Of slender urn shape, in turquoise-blue, gilt and "jewelled"; the base of the body and the circular foot moulded; on each side a shaped panel outlined in gold, finely painted by Genest with a pair of figures in Watteau costume, playing with a monkey, on one side, and on the other a bouquet of flowers. Mounted in ormolu of very fine quality. Date mark of 1753 and initials of painter in gold. (One finial repaired) (4)  
*Height, 15 inches*
- 157 **TEACUP IN OLD SEVRES PORCELAIN** FRENCH, 1770  
 The body white, finely painted with sprays of flowers; with a deep turquoise-blue rim, edged with gold. Mark of 1770; painted by Tandart.  
*Height, 2½ inches*



AN OLD SEVRES CABARET IN GROS-BLEU

[NUMBER 158]

- 158 **OLD SEVRES CABARET IN GROS-BLEU** FRENCH, CIRCA 1780  
Comprising teapot and cover, sugar bowl and cover, cream jug and two cups and saucers; decorated with gold and "jewelled" and finely painted with medallions enclosing landscapes and figures in "Watteau" costume. Mark of interlaced "Ls". (9)

[SEE ILLUSTRATION]



[NUMBERS 159 AND 160]

159 SEVRES GROUP OF DANCING FIGURES IN BISCUIT PORCELAIN FRENCH, CIRCA 1780

In the centre an altar, decorated with rams' heads and garlands of flowers, round which are dancing two nude female figures; on scrolled plinths. Interlaced "Ls" engraved on base. (Slightly defective) *Height, 17½ inches*

[SEE ILLUSTRATION]

160 SEVRES GROUP OF DANCING FIGURES IN BISCUIT PORCELAIN FRENCH, CIRCA 1780

Similar to the preceding. (Slightly defective)

[SEE ILLUSTRATION]

161 FINE PAIR OF VASES IN CHANTILLY PORCELAIN

FRENCH, CIRCA 1805

Urn shape; white porcelain, decorated with gold; the neck and foot dark green, with a trellis pattern in gold; the bodies beautifully painted with garden scenes and flowers; acanthus scroll handles on which are seated infant satyrs in biscuit, springing from dolphin heads on the shoulders. Inscribed on the base in gold, "Manufacture de Porcelaine de Pigory à Chantilly". (Handle slightly damaged) *Height, 18½ inches*

(2)



SMALL PLAQUE IN EARLY CAPO DI MONTE PORCELAIN  
[NUMBER 162]

- 162 **FINE CAPO DI MONTE PLAQUE** ITALIAN, CIRCA 1760  
Finely decorated in colored relief with a landscape in which are  
nymphs bathing and Jupiter and Juno, mounted on eagles.

*Height, 4½ inches; width, 5½ inches*

[SEE ILLUSTRATION]



CABARET IN VERY FINE OLD VIENNA PORCELAIN  
[NUMBER 163]

- 163 CABARET IN OLD VIENNA PORCELAIN AUSTRIAN, CIRCA 1750  
Comprising oval plateau, chocolate pot and cover, milk jug and cover,  
sugar bowl on stand, two cups and saucers; painted with classical  
figures and arabesques on pale green and pink panels; richly gilt;  
in original leather case. Finest quality and condition. (11)  
Exhibited at Leeds, 1868.

[SEE ILLUSTRATION]

*This catalogue designed by The Anderson Galleries  
Composition and press-work by  
Publishers Printing Company, New York*

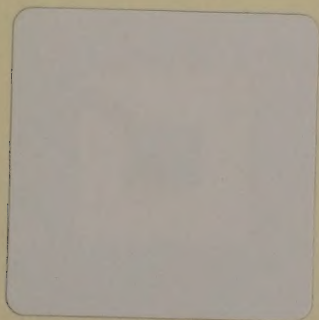












GETTY RESEARCH INSTITUTE



3 3125 01694 2266

